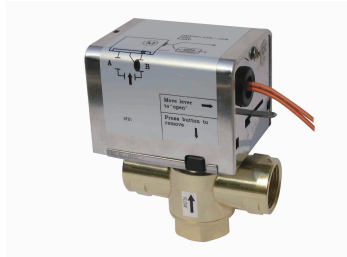


Motorized Valve ABC201



1. General Instruction Information

ABC201 series motorized valves are used to control the terminal waterway of air conditioners, which consist of thermostats that can control the motorized valves, and use speed-down devices and the reposition spring to turn the valves on/off so as to control the media in the pipe and then to control the temperature automatically with the help of the air sent by the fan coil units.

2. Features

- ✦ Stainless base with aluminum case
- ✦ Drive by completely-sealed psychomotor with stainless steel reposition spring
- ✦ Motor Voltage: 220±10%VAC 50/60HZ
- ✦ Valve Type: Normally Closed 2-way valve and 3-way diverting valve
- ✦ Customer zed motor voltage and valve body connection type

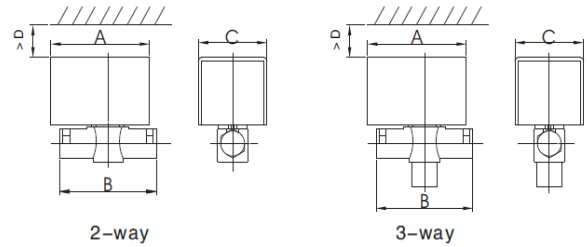
3. Function and Display

1. Power Supply: AC220v±10% 50/60HZ
2. Working medium: hot and cold water
3. Pressure: 1.6Mpa
4. Work Condition:
 - Temperature around: 0~65°C
 - Humidity range: 10-90% RH
 - Pipeline Water Temperature: 2~94°C
5. See the list below for Model, Specification Connection Type

Flow Capability:

Model	Caliber	2/3-way	Kv Rating	Close-Off(psi)
ABC201-215	1/2(15mm)	2	2.0	30
ABC201-220	3/4(20mm)	2	2.6	25
ABC201-225	1(25mm)	2	2.8	20
ABC201-315	1/2(15mm)	3	2.0	30
ABC201-320	3/4(20mm)	3	2.6	25
ABC201-325	1(25mm)	3	2.8	20

4. Dimension (mm)

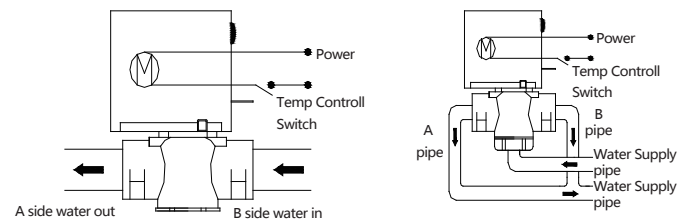


Valve Body Sizes

Model	A	B	C
ABC201-215	87	81	60
ABC201-315	87	81	60
ABC201-220	87	85	60
ABC201-320	87	85	60
ABC201-225	87	92	60
ABC201-325	87	92	60

5. Operation & Installation

1. Different pressure should be controlled within the range allowed.
2. Install the valve in the places easy for installation and maintenance.
3. Horizontally install the valve in the places void of moisture.
4. When to install the 2-way valve, the B end is for water to flow in, (with A and B marked under the valve).
5. When to install the 3-way valve, the medium will enter from under of the valve (no sign at this end). Note: End B is normally closed and end A is normally open. Please connect end B to the main pipe and end A to bypass pipe. Please refer to Fig. 3 when to install the valve.



When to manually start the valve, please carefully push the manual haft to outside, and when the haft is over the slot, then softly push it down and then the valve is in the open condition. And when to push the haft upward, the valve will return to its position at the help of its own spring. At this time, the valve is now in normal condition again.